

Farm Retirement AUCTION

Location: 6147 4th Ave SE, Hazelton, ND. From the junction of US Hwy. 83 and ND Hwy. 34 near Hazelton, ND, 2 miles north on US Hwy. 83, 2 miles west on 62nd Ave, 3/4 mile north.

TUESDAY, MARCH 29 | 10AM 2016

AUCTIONEER'S NOTE: Major equipment begins selling at 10:30 AM. Live online bidding available on major equipment. Registration, terms, & details at SteffesGroup.com



TRACK & 4WD TRACTORS

2006 Caterpillar MT765B, powershift, 4 hyd., power beyond, return flow, 3 pt., quick hitch, 1000 PTO, Trimble guidance, Ag Field Manager, WAAS signal, RTK unlockable, front suitcase weights, 16" tracks set at 120", 7,223 hrs., S/NAGCMT765KAMS61561
2002 Case-IH STX450, deluxe cab, powershift, 4 hyd., 1000 PTO, wired and JD ATU 200 steering wheel, front & rear diff lock, 520/85R46 press steel triples, 300 hrs. on remfg. engine, S/NJEE0099887
1978 Versatile 875, 12 spd. gear, 4 hyd., aux. pump, hyd. return flow, wired for ATU, JD 200 ATU, front diff lock, 20.8-38 duals, shows 9,898 hrs., engine overhaul at 9,200 hrs., S/N052714

2WD & HFWD TRACTORS

1978 JD 4840, powershift, 2 hyd., 3 pt., quick hitch, 1000 PTO, wired for ATU steering, diff lock, front suitcase weights, 18.4-38 press steel duals, shows 11,806 hrs., S/N0018107
1974 JD 4630, HFWD, 8 spd. powershift, 3 hyd., 3 pt., quick hitch, 1000 PTO, diff lock, JD 158 loader, joystick, 4-tine grapple, 14.9-24 front tires, 18.4-38 single tires, 10,000+ hrs., S/N009098

GPS EQUIPMENT

JD 200 universal steering wheel
JD 2600 display, SF2, S/NPCGU26E121092
JD 2630 display, SF2, S/NPCGU2UD430716
JD 3000 globe
JD ATU 200 steering wheel
JD ITC globe
JD brown box display with SF1 card
JD brown box display, SF1 card, 2,648 hrs., S/NPF80444-2.5

HARVEST EQUIPMENT

2008 JD 9870, STS, Contour-Master, deluxe controls, PRWD, 5 spd. feeder house, integrated auto steer, TouchSet, 22' high cap. unloading auger, Crary Big Top hopper ext., HID lights, power mirrors, round bar concaves, 650/85R38 straddle duals, 28L-26 rear tires, 1,845 sep. hrs., 2,747 engine hrs., S/NH09870S725852
JD 635 flex head, 35', full finger, fore/aft, poly, low dam, CWS wind bar, short & long dividers, S/N736445
2008 JD 608C non-chopping corn head, hyd. deck plates, (6) Lankota stalk stompers, S/NH0608CX725516
1998 JD 930 flex head, set up with Lucke 9" sunflower attachment, flex shaft, S/N677398

GRAIN CART

2004 Brent 880 grain cart, 850 bu., corner auger, hyd. tip chute, roll tarp, electronic scale, 1000 PTO, 30.5-32 bar tires, S/NB21310122



PLANTER

1992 Kinze 2600 swing fold planter, 16x30", 2.2 bu. hopper, mechanical drive, 600 gal. Totally Tubular liquid, in-furrow/2x2, Clean Sweep Residue Management system, hyd. fold markers, plumbed rear hitch, soybean cups, sunflower & corn meters

LAND ROLLER

Mandako land roller, 45', 42" drum, 5/8" steel, S/N11-05-45-12-2

SEMI TRACTORS

2005 Volvo VNL integral sleeper, D12 Volvo, 465 hp., Meritor ZF autoshift, air ride, fixed plate, twin aluminum fuel tanks, 3:42 ratio, 275/80R22.5 tires on aluminum rims, 530,049 miles
2001 Volvo VNL64T day cab, ISM Cummins, 385 hp., Eaton Fuller 13 spd., air ride, air slide 5th, 4:11 ratio, 11-22.5 low pro tires on steel rims, 608,238 miles

SERVICE UNIT

2000 Ford F250 XL Super Duty, reg. cab, Triton V8, automatic, 4WD, lockouts, Reading 8' Classic service body, 125 gal. fuel service unit w/12v pump, front winch, shows 152,802 miles

TRAILERS

2009 Timpfe tri-axle hopper bottom, 48'x102"x78", ag hopper, Shur-Co power electric roll tarp w/remote, air ride, stainless steel rear panel, double row lights, 11-24.5 tires, outside aluminum rims
2002 Timpfe hopper bottom, 42'x96"x78" sides, ag hopper, TRS electric roll tarp, electric traps, air ride, double row lights, 11-24.5 tires on outside alum. rims
2005 Exiss ES400 Signature Sport tandem axle aluminum 4-horse trailer, 22', tack room & saddle carrier, segregated, 8-window
Tandem axle bumper hitch livestock trailer, 16', open side
Johnson header trailer, 30', single pole
2007 PJ tri-axle gooseneck trailer, 34', 28' bed, 6' dovetail, triple flat-fold ramps, front toolbox, 8-hole rims
2013 Thunder Creek tandem axle fuel trailer, 750 gal., 110 gal. DEF, twin hose reel, 6.5 hp. Power Pro pump, rear storage, light pkg., 8-hole aluminum wheels

SELF-PROPELLED SPRAYER

1999 Ag-Chem Rogator 854, 80' full hyd. stainless steel boom, 800 gal. stainless steel tank, foamer, wired for JD ATU auto steer, hyd. tread adj., rinse tank, chemical inductor, 5-section control, Raven SCS661 auto rate controller, 320/90R46 tires, 5,408 hrs., S/N8535199
Set 320/90R46 hub duals for Rogator 854



FERTILIZER & CHEMICAL EQUIPMENT

2005 Bandit 1700 tow-behind tri-liquid cart, 1,700 gal. cone bottom, John Blue ground drive pump, hyd. control, Honda transfer pump, 21.5-16.1 flotation tires
Raven Sidekick injection system, set up for Ag-Chem Rogator
Shop-built side dresser, 16x30", 3 pt., hyd. fold, Yetter spring coulter, liquid drop, set up with 1,500 gal. gooseneck tender cart, hyd. drive, Flexi-Coil on/off monitor, front gauge wheels

HOPPER BINS & AUGER

(2) Westeel hopper bins, 9,200 bu., Nordin triple pad steel bottoms, bullet tubes, roof vents, side ladders, 26" Grain Guard 10 hp. fans, 1 phase
Westfield auger, 44'x10", mechanical low pro swing hopper, hyd. hopper walker

FORKLIFT

Caterpillar V50D forklift, LP, side shift, 5,000 lb., 3-stage, 4,818 hrs., S/NBEC1192

OTHER EQUIPMENT

NH 851 chain-style baler
Mohawk hyd. fold mower, 15', safety chain, 540 PTO
(2) 2008 Fuel tanks, 2,000 gal., Tuthill pumps, auto shut-off nozzles
JD LT166 lawn tractor, 46" mulching deck
Poulan Pro snowblower, 27", 8.5 hp.
Asst. tack including saddle & blankets

BUSINESS BAND RADIOS

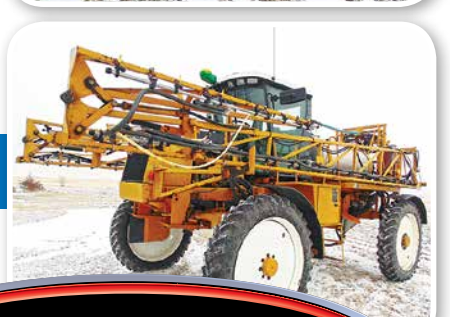
(7) UHF, Kenwood & Uniden radios, programmable, magnet antennas
(1) Handheld radio w/charger

COMPRESSORATOR & GENERATORS

JD AC2-CG35H-P compressorator, air compressor/generator w/hose reel
Pincor generator, 20 kw, PTO
Briggs generator, 5,500 watt, 8,500 start
Honda portable generator, 800 watt

SHOP EQUIPMENT & PARTS

Buddy Lube oil bar, (3) 70 gal. tanks, gravity flow
Knipco heater, 150,000 btu
Mr. Heater heater, 150,000 btu
Misc. log chains
Large nylon tow rope
Flexi-Coil booms, 120', off pull-type sprayer
PTO shafts & Misc. tires



MARK & LORI SCHMIDT

701.782.4311 or 701.400.1626

or Brad Olstad of Steffes, 701.237.9173 or 701.238.0240

Registration, Terms, Photos, & Details at SteffesGroup.com

TERMS: All items sold as is where is. Payment of cash or check must be made sale day before removal of items. Statements made auction day take precedence over all advertising. \$35 documentation fee applies to all titled vehicles. Titles will be mailed. Canadian buyers need a bank letter of credit to facilitate border transfer.

Steffes Group Inc., 2000 Main Avenue East, West Fargo, ND 58078
 Brad Olstad ND319, Scott Steffes MN14-51, Bob Steffes ND82, Max Steffes ND999,
 Ashley Huhn ND843, Eric Gabrielson ND890, Randy Kath ND894

701.237.9173 | SteffesGroup.com

